

CATALOGUE



OCEANS OF ART

COCKTAIL PARTY
& ART AUCTION

ENVIRONMENT TASMANIA
The Conservation Council



THE OCEANS AROUND ENVIRONMENT TASMANIA

From towering kelp forests to ancient sponge gardens, cold corals to deep submerged river valleys, from whales and rare Handfish to abalone and crayfish - our oceans provide a place of wonderment and a source of sustenance.

As islanders, we Tasmanians work, play, and holiday on the coast. But even if we don't live by the sea, our oceans play a crucial role in everyone's life. Our oceans produce half of all of the oxygen we breathe and provide the largest store of carbon in the world. They regulate temperature and control climatic systems such as rainfall, as well as offering medical treatments for diseases like cancer.

Yet every day the pressure is mounting. The combined impact of climate change, marine pests, pollution, and decades of fishing are threatening our wildlife, the sustainability of our fisheries, our livelihoods and our idyllic island lifestyle.

The good news is there are solutions to the problem! Marine national parks can create recovery zones for species under pressure, protect the full range of marine life, and increase the health and resilience of our environment to withstand pressures like invading pests.

Yet, just 1% of Tasmania's marine environment is protected in marine national parks. It's time we got serious about securing the future of our marine life.

Thanks for being part of the 2010 Oceans of Art Cocktail Party & Auction and supporting Environment Tasmania's campaign to protect our unique and diverse marine life. Together we can ensure there is a sustainable future for our oceans, and all that depend on them.

For the oceans,



Rebecca Hubbard
Marine Coordinator
Environment Tasmania

THANKS!

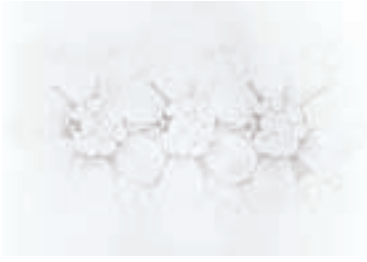
Enormous thanks to the many talented artists that have generously donated their work to this important event, and to the Oceans of Art voluntary organisers, Maddy Goodwolf and Jen Sharman for their dedication, creativity and persistence!

SUE ANDERSON

PENCIL ON PAPER
"PERFECT BALANCE"
MARKET VALUE \$450

Sue's art practice developed in retirement when the choice of a unit called Art, Science and Marine Biology within a BFA at the University of Tasmania, set her on a course of action that has developed in surprising ways.

SUE ANDERSON (CONT.)



Sue is concerned that science data, so vital to many areas of life, can be trapped in a language that does not seem to touch the public imagination. This has led to a consideration of what part the arts can play in telling these important stories. Sue was also involved in the formation of the Lynchpin Scholarship - The ocean-specific Lynchpin scholarships aim to support students whose research studies explore the critical role of marine plankton in 'planetary metabolism', contribute to the understanding of the role of the oceans in the carbon cycle and the impacts of ocean acidification.

KARIN BEAUMONT

STERLING SILVER AND KELP (BROOCH)
"EARTH ELEMENTS III & KELP CRADLE"
MARKET VALUE \$850



Raised in South Australia, Karin moved to Tasmania in 1995 to pursue her childhood dream to journey to Antarctica. Inspired by her marine scientific research, Karin draws upon microscopic patterns and forms to create sculptural jewellery and objects that combine an aesthetic of marine fragility with quiet environmentalism. www.oceanides.com.au

UNDERWATER ADVENTURES TASMANIA

DIVE IN TASMANIA'S
SPECTACULAR KELP FOREST
FOR TWO
MARKET VALUE \$250

You don't have to be a qualified scuba diver to discover the underwater world: you can have your own scuba adventure under our supervision! With Underwater Adventures Tasmania, you can explore kelp forests and marine reserves and see all the colour and diversity of marine life that qualified divers see. Your instructor will give you a brief introduction to the basics of safe use of scuba equipment, help you into the gear and then practise some basic skills with you before we take off on our adventure.

CHRISTL BERG

DIGITAL PRINT ON ARCHIVAL PAPER,
EDITION OF 5,
530 X 500
'WATER #3'
MARKET VALUE \$500



Christl Berg has lived in Tasmania for the past 25 years. She has a Masters degree and a PhD from the University of Tasmania and has been a lecturer there for the last 20 years. Christl's art practice has over the past ten years increasingly focused on her sense of place in Tasmania. Her work has been shown in numerous solo and group exhibitions and is held in public collections such as the National Gallery of Victoria, the Tasmanian Museum and Art Gallery, the QVMAG in Launceston, the Regional Art Gallery in Burnie, Artbank Australia, The University of Western Sydney, The Canberra University, and the Australian National University.
www.handmarkgallery.com

ROB BLAKERS

PHOTOGRAPHIC INKJET PRINT 900 X 780
"MYRTLE FOREST, WALLS OF JERUSALEM
NATIONAL PARK"
MARKET VALUE \$300



Rob Blakers moved to Hobart in 1980 and worked with Tasmanian NGOs on a range of environmental issues. From 1985 Rob has worked as a photographer specializing in Tasmanian landscapes. Images from Rob's collection have been used extensively for nature conservation and in a wide variety of publications including books, magazines, posters, cards, calendars and diaries.
www.robblakers.com

SALLY BROWN



WATER-HARDENED LEATHER, NAILS
"HUSK"
MARKET VALUE \$1150

Sally Brown was born and raised in Tasmania, where frequent visits to the remote South West led to an appreciation of the natural environment. From 2000 Sally studied Furniture Design at the University of Tasmania, completing a Bachelor of Fine Arts with Honours in 2004. Sally now produces sculpture and contemporary craft and design objects from her Cygnet studio. She works primarily with metal and salvaged materials, frequently incorporating textile based processes. Sally's work is characterised by her experimental use of materials and organic yet abstract forms. www.sallybrown.com.au

KAREN HARVEY



TWO COLOUR ETCHING.
UNIQUE STATE. 165 X 125
"CRUSADER, PART ONE"
MARKET VALUE \$500

This image is part of a body of printed and sculptural work made in response to concerns of the human and environmental condition. Karen Harvey is an emerging artist currently completing a Bachelor of Fine Arts at the Tasmanian School of Art, Hobart.

PEPPERMINT BAY CRUISE

DAY CRUISE FOR 2
MARKET VALUE \$240

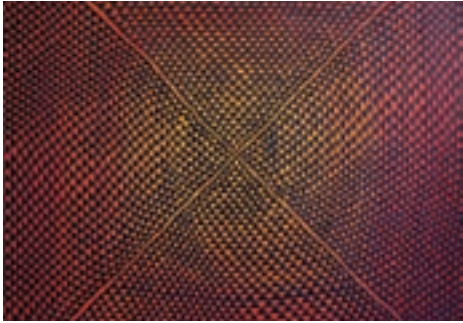
Be assured of a relaxing, rejuvenating and rewarding day discovering the real Tasmania on board the luxurious 23 metre catamaran, Peppermint Bay II. Leaving from the tourist hub of Sullivan's Cove in Hobart Tasmania, the Peppermint Bay Cruise takes in the harbour, the River Derwent, and the magnificent waters of the d'Entrecasteaux Channel, on its way to Peppermint Bay

FARIDAH CAMERON

ACRYLIC ON CANVAS 1200 X 1200

"COUNTRY"

MARKET VALUE \$2950



In 1993 Faridah co-founded a visual theatre company based in Queensland with international theatre director Neil Cameron. As artistic director and principal artist she oversaw the design and creation of stunning imagery for dozens of events across Australia. After completing her Master of Fine Art degree in Queensland she relocated her practice to Hobart, in 2004. She was a finalist in the Sovereign Asian Art Prize (Hong Kong 2005), the Waterhouse Natural History Art Prize (Adelaide 2005), the Archangel Art Prize (Melbourne 2009, 2010), the Togart Contemporary Art Prize (Darwin 2009) and the Glover Prize (2010). www.faridahcameron.com

MADELEINE GOODWOLF

OIL ON CANVAS 800 X 800

"AND WHEN NIGHT SEEMS TO NEVER
END, I FIND MYSELF IN PLACES
FAR FROM HERE"

MARKET VALUE \$1200



Born in Brisbane in 1975, Madeleine completed a Bachelor of Fine Art at the University of Tasmania in 1998. She has had many solo exhibitions and group exhibitions in Tasmania, mainland Australia and overseas. In 2001, Madeleine received the Förderpreis der Dr. Rudolphe-Zorn-Stiftung. She is the Co-founder of Tapir Print Workshop in Cygnet, and was a Printmaking tutor in the late 1990s. Her work is part of the Tasmanian Museum and Art Gallery collection.

LAKE PEDDER SAND

Market value: PRICELESS

Collected by an activist from the original Lake Pedder campaign. Passed on by some old ladies in Richmond and sat on Nik Magnus's childhood shelf.

NIC GOODWOLF

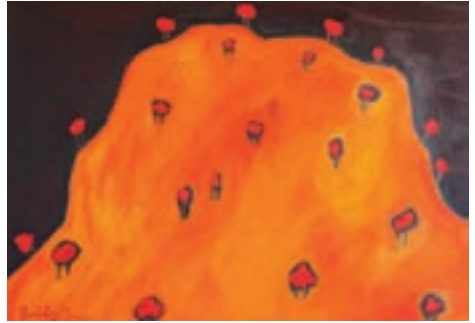
MULTI PLATE ETCHING
"BIKE 1" AND "BIKE 2"
\$1100 FRAMED



Born in Kempten, Germany, Nic studied at the School for Graphic Arts, Augsburg, Germany, and completed a Bachelor of Fine Arts at the University of Tasmania. Nic then studied at the School for Performing Arts, Berlin, Germany before completing a Diploma of Education at the Charles Sturt University, NSW. Nic has had many solo exhibitions, as well as contributing to group exhibitions in Tasmania, inter-state, and overseas. His prints are part of collections around the world, including Artbank, Kempten, Allgau Museum in Germany, Bayrische Staatsgalerie in Munich, Germany, the Tasmanian Museum and Art Gallery, and the Charles Sturt University Collection.

BOBBY-Z LAMBERT

S.P AND OIL BAR
"FRIENDSHIP HILL NO. 4"
MARKET VALUE \$2500



I paint "people" real and fictional in my own style. Doing the things that make us human, in an attempt to better understand and chronicle all aspects of our existence, drawing on personal experiences, historical accounts and people I interview and observe, both at home and around the world. Bobby-z. "This is one of the most exciting and collectible artists I know. Fabulous, confronting, scary, but always in close dialogue with twentieth-century life." Professor Adrian Franklin.
www.bobby-z.com

JAGAMA HAIR AND STORE

PAMPER PACK
MARKET VALUE \$250

Treat yourself to one of Jason and the Jagama team's amazing, organic hair and beauty sessions.

THOMAS MOORE PHOTOGRAPHY

MAGICLÉE CANVAS 600 X 1200

"RALPHS BAY TWILIGHT - JUNE 22, 2010"

MARKET VALUE \$700



The fight to save Ralphs Bay from a toxic canal estate development began on March 17th, 2004 as Tasmanians rallied around shared environmental, economic, and community values. After over half a decade of taking the message to the streets, informing the public and political leaders, and challenging the proponent in the planning system, a hard won victory was finally realized. On June 22, 2010 the bay was saved and this image of waters finally calmed was captured.

Dr Thomas Moore PhD is an oceanographer who spends most of his time doing all he can for Tasmania's coasts and oceans. He is one of the founding members of Coastview, a surfer, and a professional photographer. www.thomasmooresphotography.viewbook.com

JULIAN BUNDA

DRAWING 740X 370

ROCK STUDY

KEVIN PERKINS

AGED EUCALYPT WOOD 400 X 400

'THE RAPE OF TASMANIA'S FORESTS'

MARKET VALUE \$2200



Born in 1945 in Launceston, Tasmania, furniture designer-maker, Kevin Perkins takes inspiration in conservation issues and a sense of place elicited by the history, traditions, forests and wildlife of his home-state. He has established a reputation over four decades as Australia's foremost maker of fine timber furniture. He has exhibited in numerous exhibitions, both nationally and internationally, recently including Material Culture (2005) at the National Gallery of Australia, Canberra and Convergence (2005), which toured to Hobart, San Francisco and Chicago. Perkins' work is included in many important collections including the Powerhouse Museum, Sydney; the National Gallery of Australia, Canberra and the Tasmanian Wood Design Collection, Launceston.

PETER POULET

ACRYLIC ON CANVAS 450 X 350
"UNTITLED 2010"

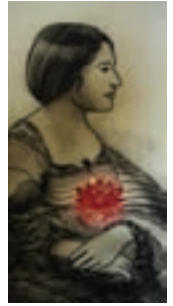


My painting, like architecture, describes space, explores form, uses symbols and language and establishes dynamic environments. My work occupies the field of intuition and speaks of new worlds. By so doing, it challenges the conventions and limits of the world we know; an ongoing dialogue that offers surprises and new discoveries..."

Peter Poulet has an architecture degree and has studied and worked in Japan following the award of the Monobusho Japanese Government Fellowship. Artist in Residence positions include Bundanon (1999) and New England Regional Art Museum (2002). Combining his love for painting with his career outside the studio, Poulet is now State Architect, Tasmania.

MANDY RENARD

DRY POINT ETCHING 390 X 800
"NAVIGATING THE SEA OF BEGINNINGLESS LIVES"
\$1000



Mandy has a Bachelor of Fine Arts from the University of Tasmania. Mandy's works focus on themes of beauty, the sense of "home", and her love of the Tasmanian landscape. Her past works have used personification to transform Tasmanian iconic locations such as Mt Wellington into intriguing Elizabethan or Dickensian characters. Her technique of placing the most important aspects of each landscape within each character's garments has made Mandy's work an immediate success.

JONATHAN PARTRIDGE

MULTI PLATE ETCHING 920 X 600
"SILENT HEART" AND RAKU FIRED CERAMIC "CIRCLE OF HEARTS"

After completing his BFA at Queensland University of Technology, Jonathan studied under Bhutanese Master Sculptor Kunchog Palden in Nepal and thereafter he studied for many years under the Tibetan State Master Sculptors and Painters, Sonam Wangchuk and Kelsang Lodro Oshoe in India. Jonathan's practice encompasses three and two-dimensional forms as a ceramicist, sculptor and painter and printmaker. After extended periods living overseas he now lives in Tasmania. He has exhibited widely and his work has been commissioned in Nepal, France and India and by the Tasmanian Chamber of Commerce and Industry.

MICHAEL SCHLITZ

WOODCUT 880 X 600
"WOMAN OF SUN"
MARKET VALUE \$1000



Michael worked as a jeweller in Brisbane then studied art at Darling Downs Institute of Advanced Education and the University of Southern QLD. He taught at TAFE in Toowoomba before moving to Tasmania where he finished a Masters Degree at the Tasmanian School of Arts. Michael is represented at Dick Bett Gallery in Hobart and Noreen Graham in Brisbane.

DOUG THOST

TYPE-C PHOTOGRAPHIC PRINT ON FUJI
CRYSTAL ARCHIVE PAPER, 600 X 1000
ICEBERG I AND ICEBERG IV
MARKET VALUE \$260 EACH



Born in Sydney, raised in Malaysia and rural NSW, Doug Thost now calls Hobart "home". Doug has a background in geology and glaciology and has visited Antarctica 18 times. He has been shooting landscape and wilderness images for over 20 years. His current projects include portraits of men and women who spend their life flying, and aerial photographs of Tasmania's more remote regions. Doug also offers affordable photographic services in the Hobart area, including family portraits, event and wedding photography. www.dougthost.com

AUBREY WOOD

OIL PAINTING 610 X 762
"LOST WORLD"
MARKET VALUE \$600

A well-loved local stonemason, Aubrey has been painting and drawing in his free time for years, and is now pursuing further education in the arts.



TRICKY WALSH

OIL PAINTING 1240 X 1240

"SHE NEVER FORGOT A FACE"

MARKET VALUE \$5200



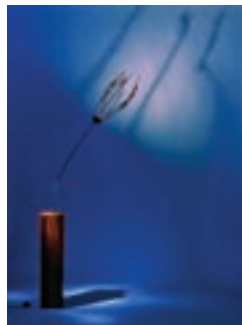
Tricky Walsh builds circuits. Her installation practice is defined by interconnecting components that construct conceptual environments or in which she assembles deconstructive machines that illustrate a system of social and architectural orthopaedics. She also paints, makes comics and films. Since graduating from a Bachelor of Fine Arts in 2002 Tricky has been involved in numerous solo and group exhibitions in Tasmania and around Australia. She was the winner of the 2009 Hobart Art Prize and her works are held by Hobart City Council, Kingborough Council and in private collections throughout Australia and overseas. www.trickywalsh.com

STUART WILLIAMS

BLACKWOOD, STAINLESS STEEL AND SHE-OAK 2200 X 200 X 200

"REACH FOR THE SUN"

MARKET VALUE \$1500



Since finishing a BFA majoring in Furniture Design at the University in Tasmania, Stuart has established his business Touching Space, and now focuses on designing and producing lighting and furniture for clients across Australia. He has featured in the select national design exhibitions Workshopped and Launch Pad on repeat occasions, has exhibited in the Milan Furniture Fair and been involved in numerous exhibitions. "My work is about finding a sense of place within the urban landscape. The main idea I guess is to capture the audience. To hold them for a moment in wonderment, especially in today's technological age."

LILLY WORTZEL (ALSO KNOWN AS LILLY BLUE)

WATERCOLOUR 300 X 420
UNTITLED



Lilly Wortzel, also known as Lilly Blue, has spent her life traveling the world, settling in both remote and vibrant communities, and relishing the possibilities that arise when one lives as a citizen of the earth. She has always been intrigued by the mystery of the creative process and the personal, social and cultural riches born of such pursuits.

Lilly graduated from the Tasmanian School of Art and moved to New York City to continue her creative work. In 2006 Lilly was discovered by the historic Galerie, LWS in Paris, France. She has since participated in a number of Parisian shows including four consecutive years of success at the Salon Dessin Du Contemporain, one of Europe's most significant works on paper shows. Lilly lives in Sydney and continues to show her work both locally and internationally.

SARA WRIGHT

SOUTHERN ICE PORCELAIN
"ORGAN PIPES VASE"
LARGE AND MEDIUM
MARKET VALUE \$405 AND \$360



Sara received her Bachelor of Arts and minor in Industrial design in the USA. Sara migrated to Newcastle NSW for love in 2003 settling in Tasmania in 2006 for the water and wilderness. As well as working as an arts administrator she has exhibited acclaimed bodies of work at regional galleries, won the People's Choice Award in the 2007 Design Island exhibition, worked under Peter Battaglione, and received the CAST Youth Craft Mentorship to work with Rod Bamford. The death of her younger brother in late 2007 from testicular cancer had a profound effect on her and she now concentrates fully on her ceramic practice. She is currently one of two recipients of the 2010 Moorilla Scholarship.